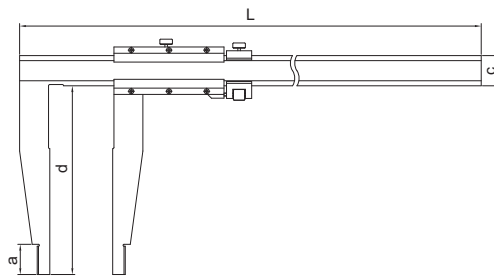
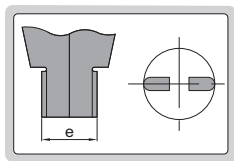


LONG JAW VERNIER CALIPER



1215-1032



(mm)			
Range	a	e	L
0-300mm	10	10	410
0-500mm	18	20	670
0-600mm	24	20	770
0-800mm	24	20	1016
0-1000mm	24	20	1216

- With fine adjustment
- Made of stainless steel
- Satin chrome plated reading surface

Graduation 0.02mm (mm)

Code	Range	Accuracy	c	d
1215-391	0-300mm	±0.05mm	17	90
1215-321	0-300mm	±0.05mm	24	150
1215-521	0-500mm	±0.06mm	24	150
1215-531	0-500mm	±0.06mm	24	200
1215-621	0-600mm	±0.06mm	24	150
1215-641	0-600mm	±0.08mm	32	250
1215-821	0-800mm	±0.07mm	32	150
1215-831	0-800mm	±0.07mm	32	200
1215-1031	0-1000mm	±0.08mm	32	200
1215-1051	0-1000mm	±0.11mm	32	300

Graduation 0.02mm/0.001" (mm)

Code	Range	Accuracy	c	d
1215-392	0-300mm/0-12"	±0.05mm	17	90
1215-322	0-300mm/0-12"	±0.05mm	24	150
1215-522	0-500mm/0-20"	±0.06mm	24	150
1215-532	0-500mm/0-20"	±0.06mm	24	200
1215-622	0-600mm/0-24"	±0.06mm	24	150
1215-642	0-600mm/0-24"	±0.08mm	32	250
1215-822	0-800mm/0-32"	±0.07mm	32	150
1215-832	0-800mm/0-32"	±0.07mm	32	200
1215-1032	0-1000mm/0-40"	±0.08mm	32	200
1215-1052	0-1000mm/0-40"	±0.11mm	32	300

Graduation 0.05mm (mm)

Code	Range	Accuracy	c	d
1215-393	0-300mm	±0.07mm	17	90
1215-533	0-500mm	±0.08mm	24	200
1215-833	0-800mm	±0.10mm	32	200
1215-1033	0-1000mm	±0.12mm	32	200

Graduation 0.05mm/1/128" (mm)

Code	Range	Accuracy	c	d
1215-394	0-300mm/0-12"	±0.07mm	17	90
1215-524	0-500mm/0-20"	±0.08mm	24	150
1215-534	0-500mm/0-20"	±0.08mm	24	200
1215-624	0-600mm/0-24"	±0.08mm	24	150
1215-834	0-800mm/0-32"	±0.10mm	32	200
1215-1034	0-1000mm/0-40"	±0.12mm	32	200
1215-1054	0-1000mm/0-40"	±0.15mm	32	300